

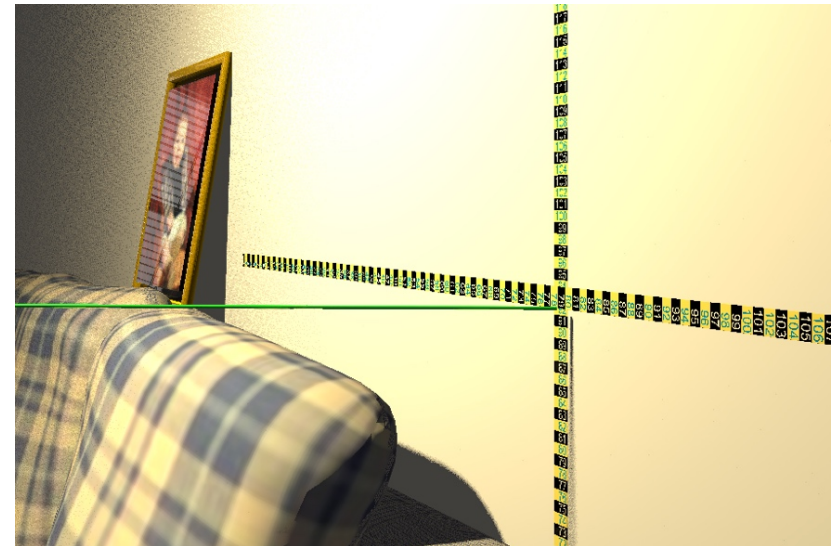


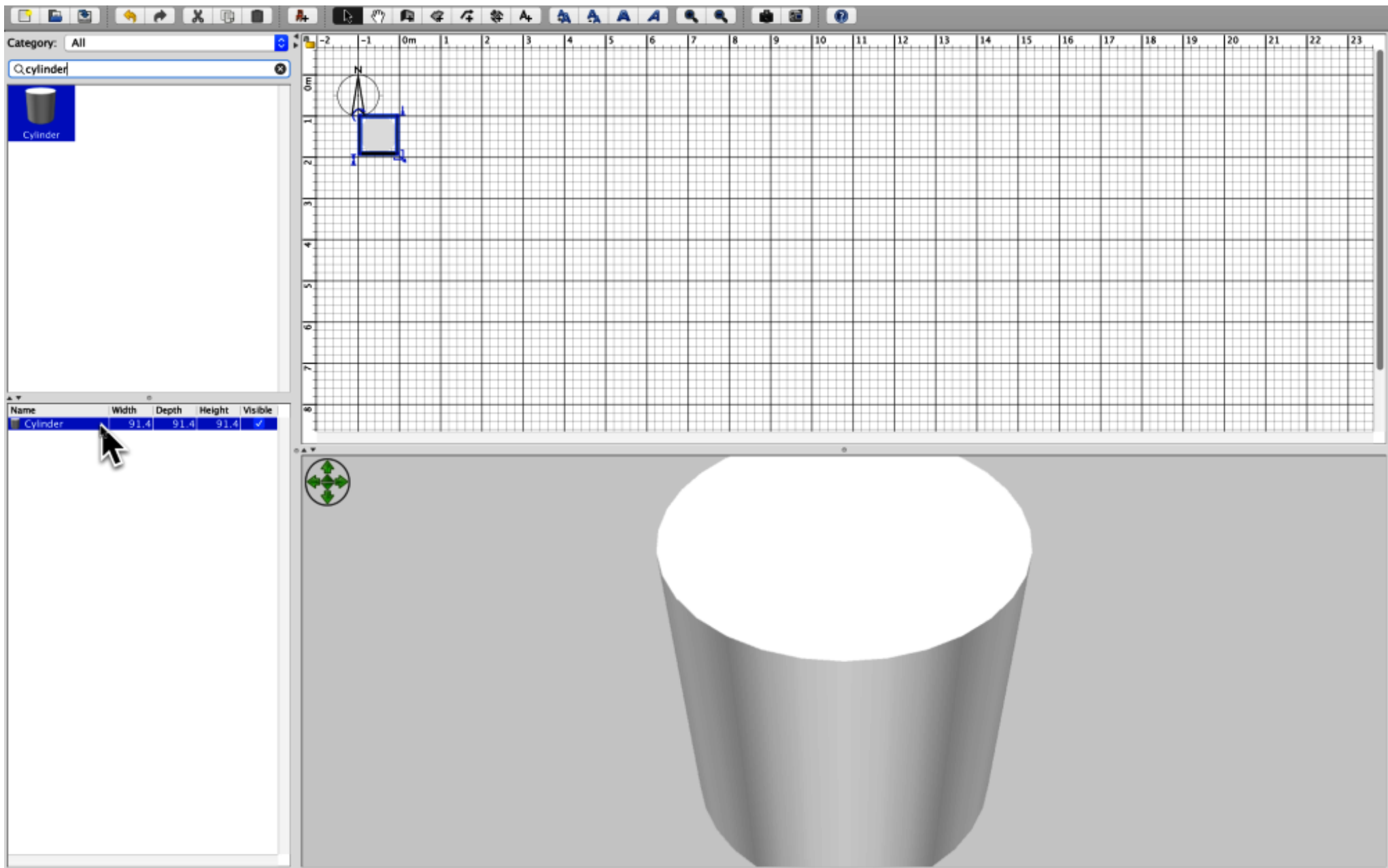
SHOOTING RECONSTRUCTION IN SWEETHOME3D®

Making models from furniture library.

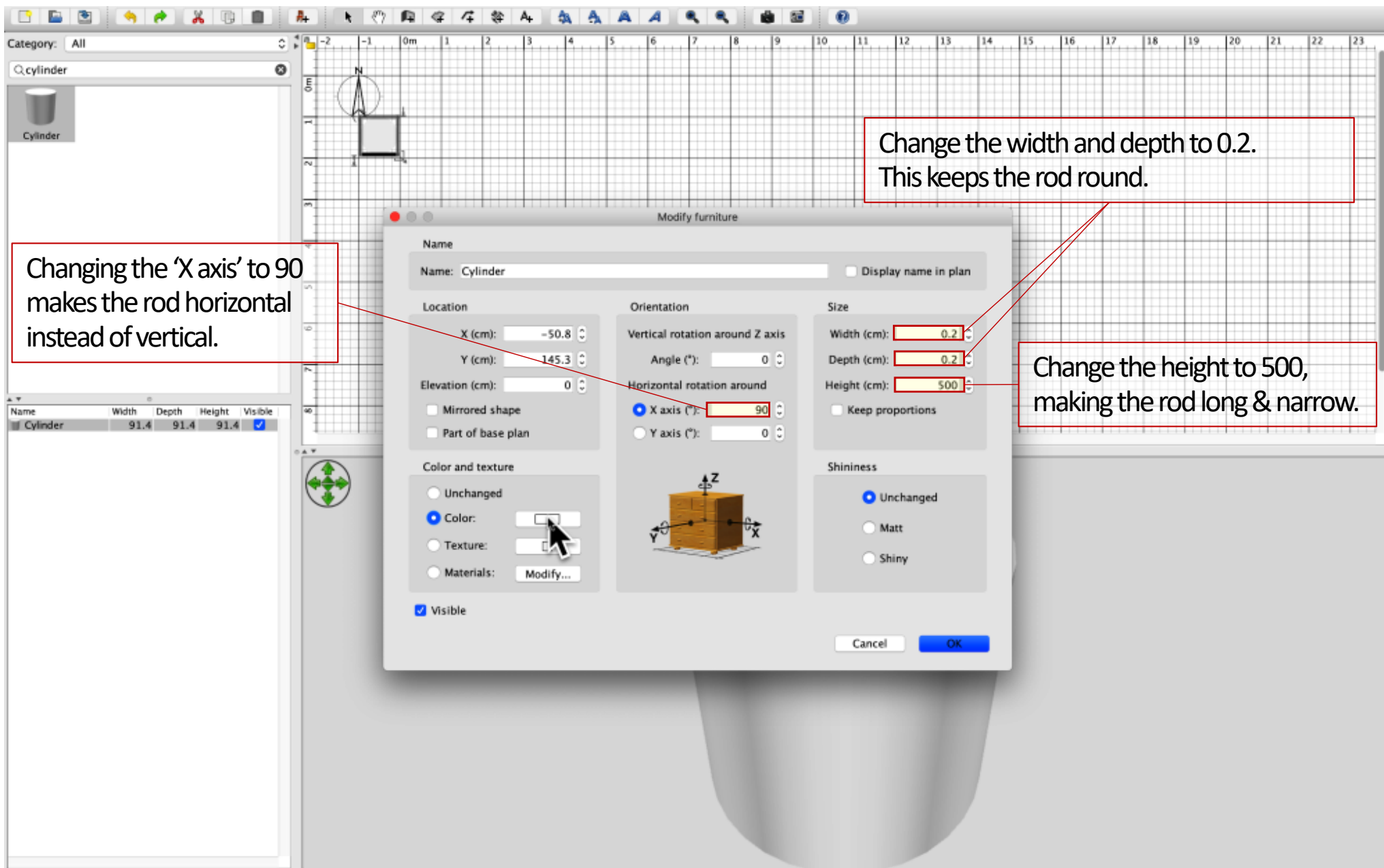
Visualizing trajectories in scene context is key to understanding what could or could not have occurred during a shooting incident.

SweetHome furniture models can be modified, exported as .obj files, then imported as new furniture.

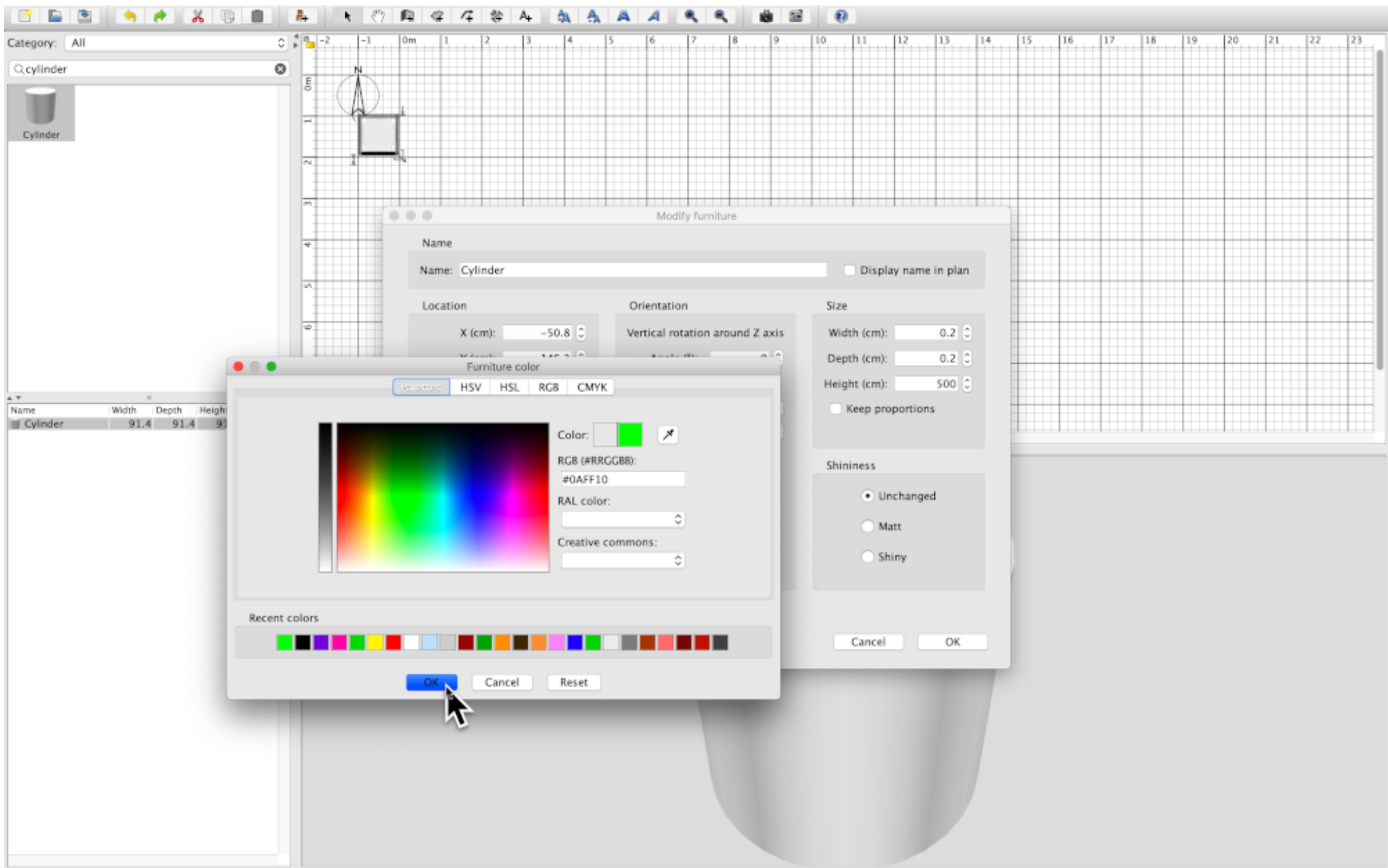




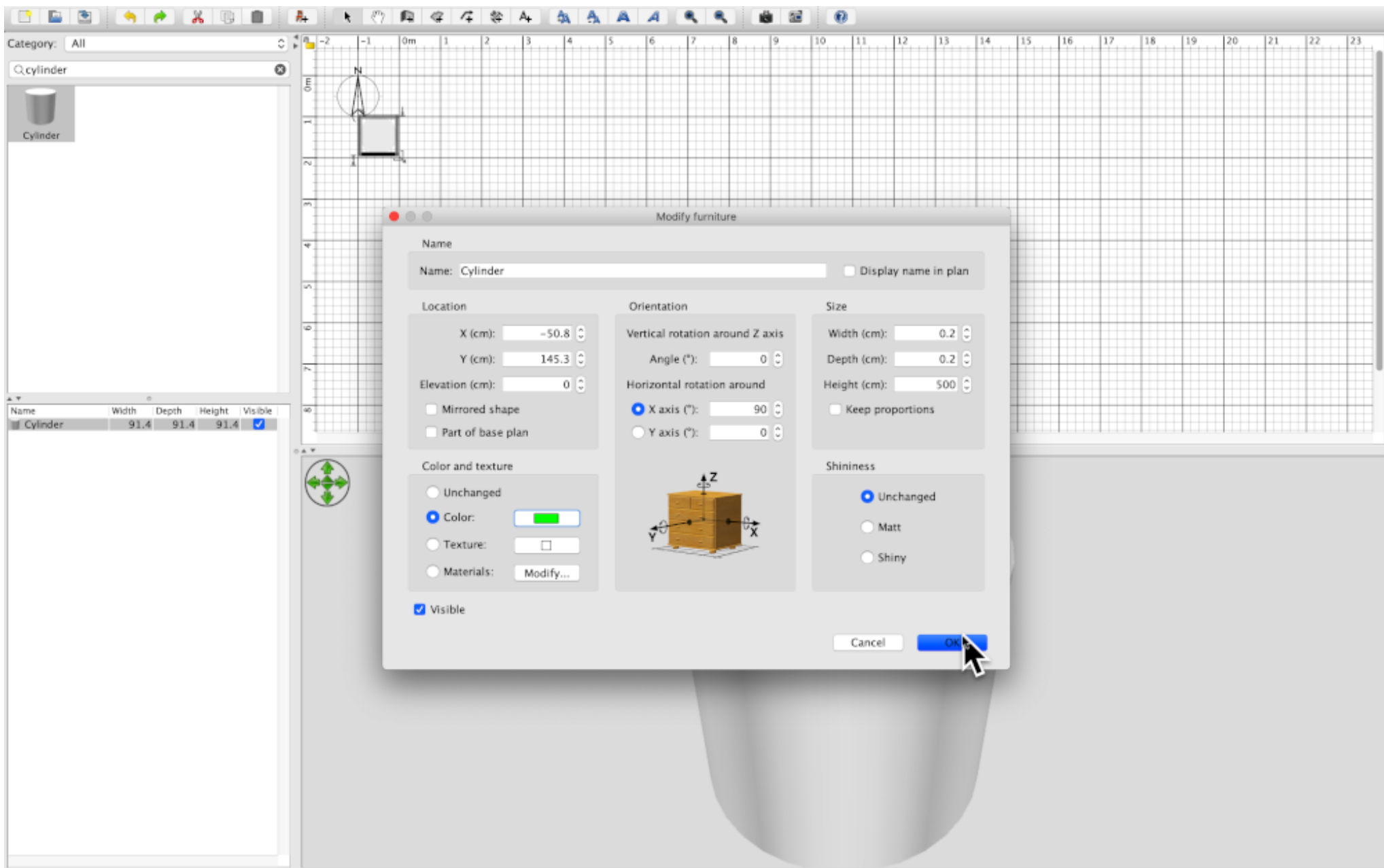
Open a new a new SweetHome file. Save this file as “trajectory rod”.
Locate the cylinder in the furniture library and drag it into the blank scene.
Double-click on the cylinder to open the ‘Modify furniture’ menu.



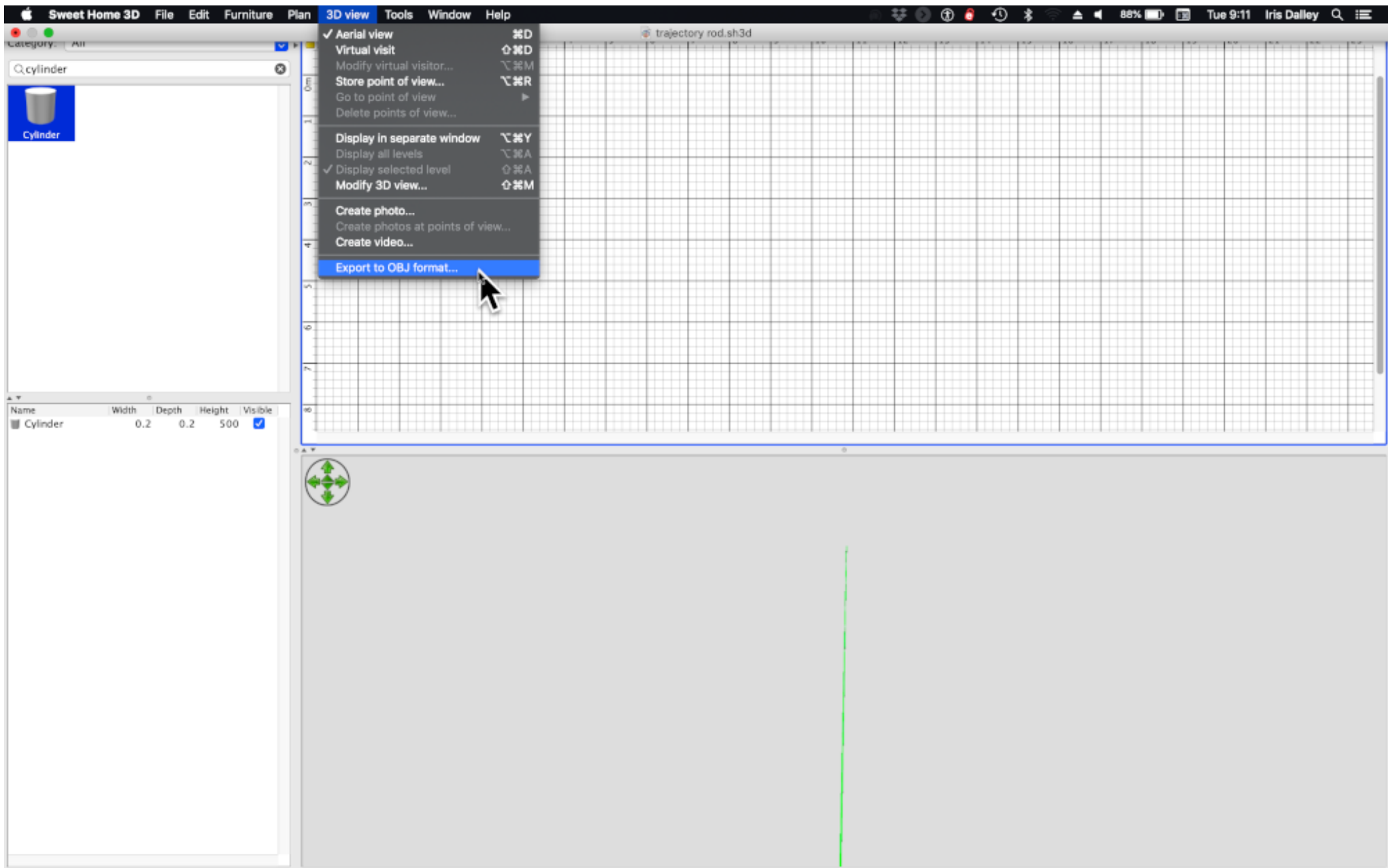
In the 'Modify furniture' menu, change the orientation and size of the rod. Then select "Color".



Select the 'dropper' icon, then move cursor over desired color or select a color from the palette across the bottom of the 'Furniture color' menu. 'OK'.

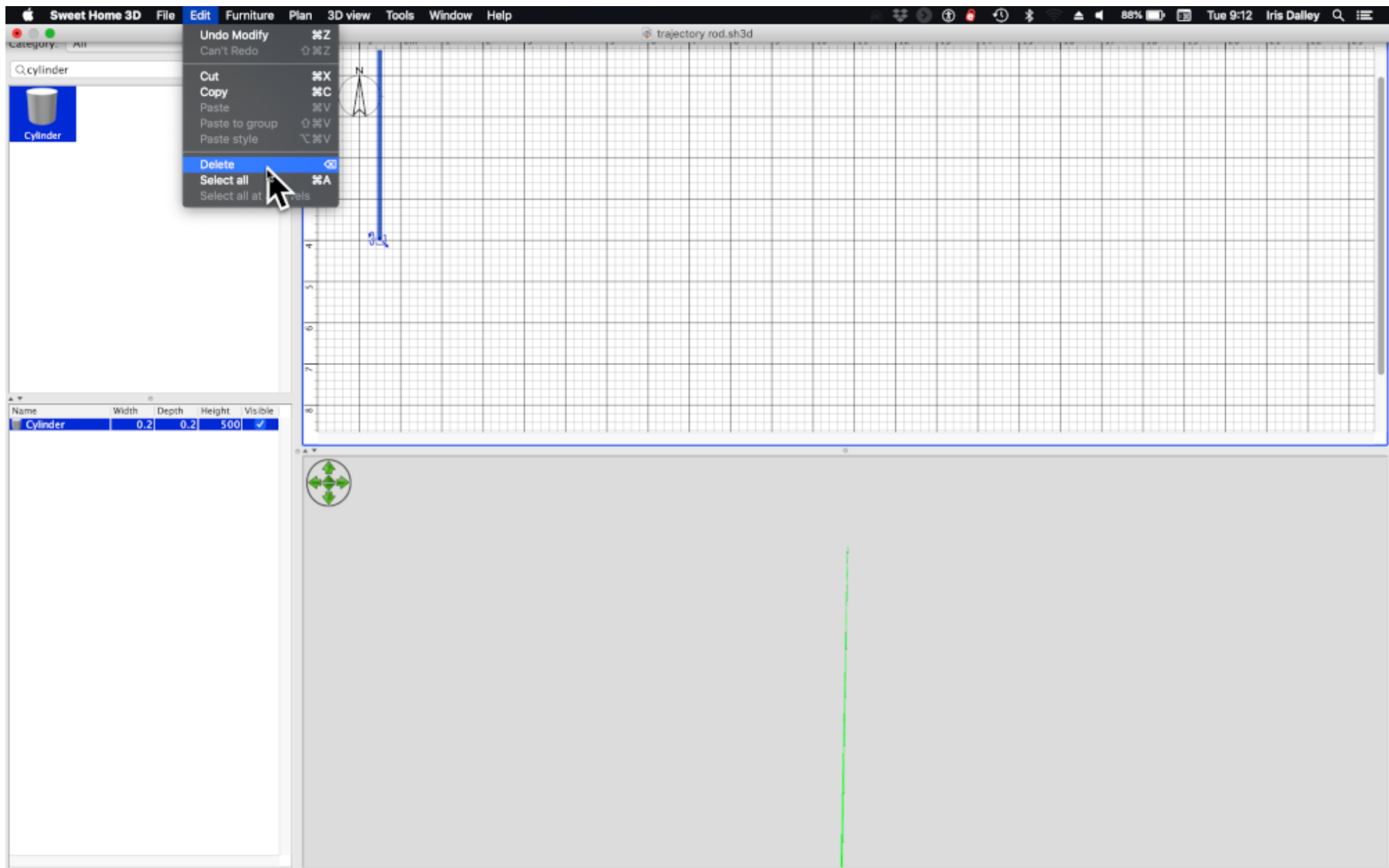


Re-check the changes in the 'Modify furniture' menu, then 'OK'

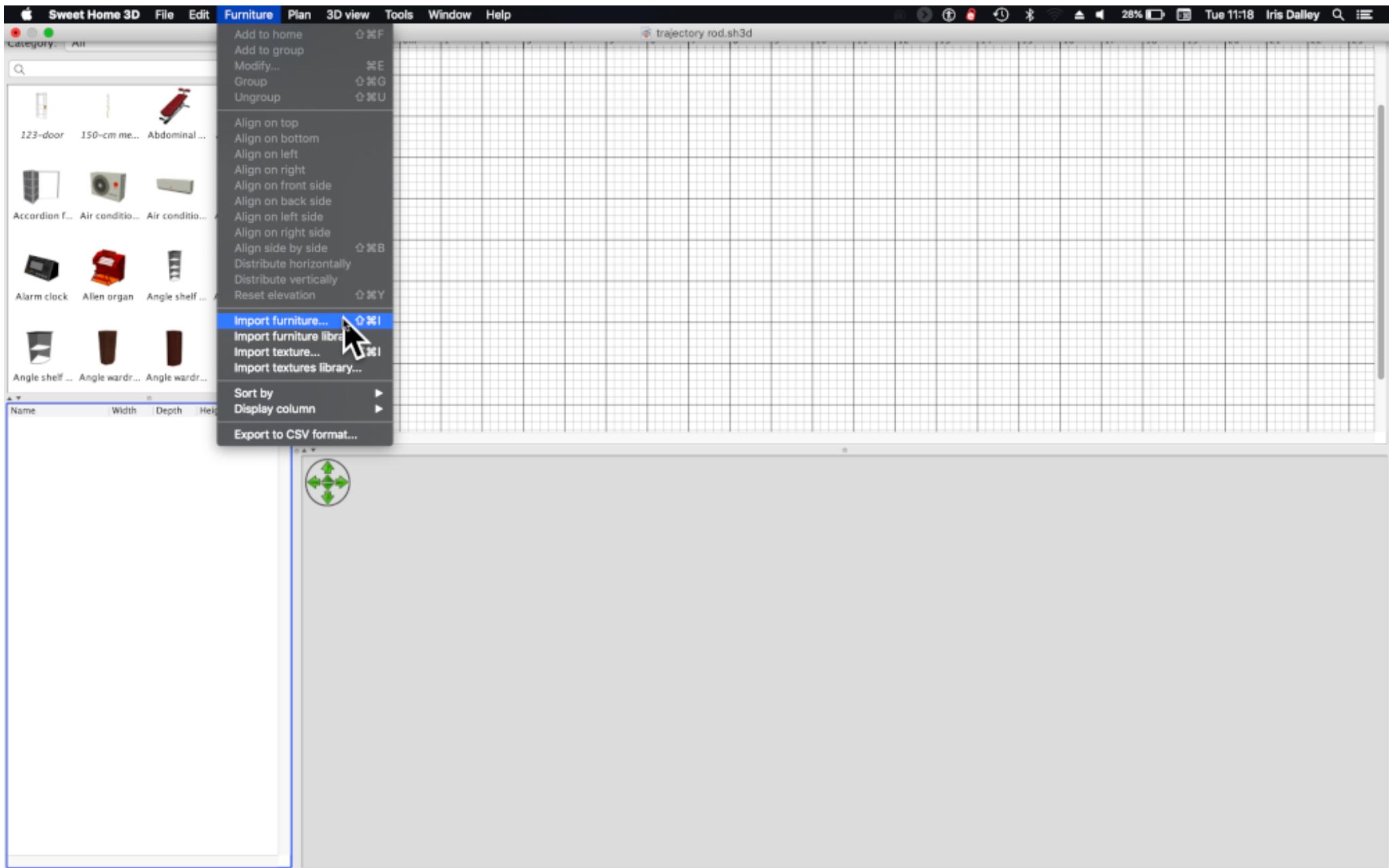


Select '3D view / Export to OBJ format.

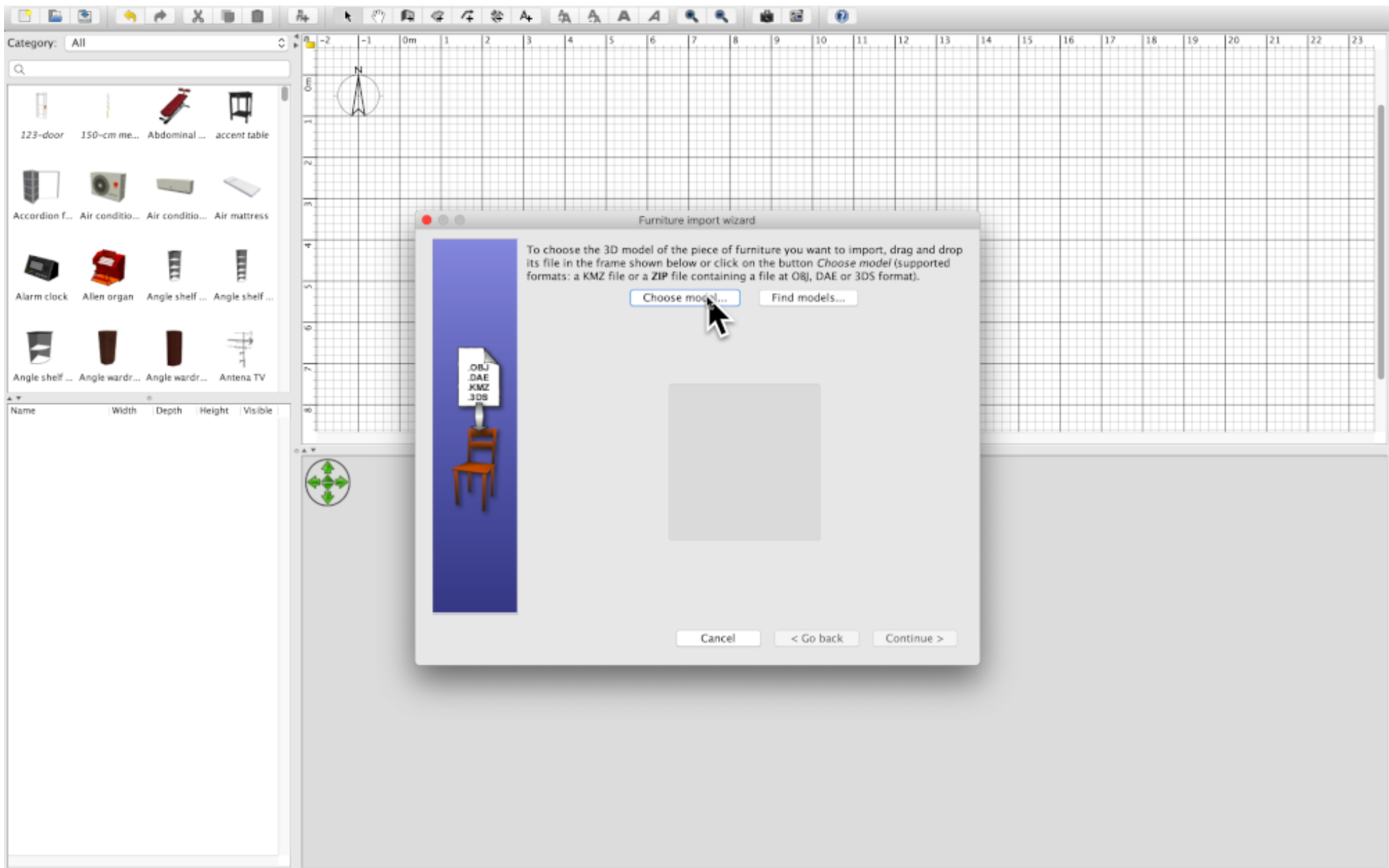
The entire scene, which is only the rod, will be exported as a .zip file containing the .obj file. The .zip file name will be the same as the SweetHome file name "trajectory rod".



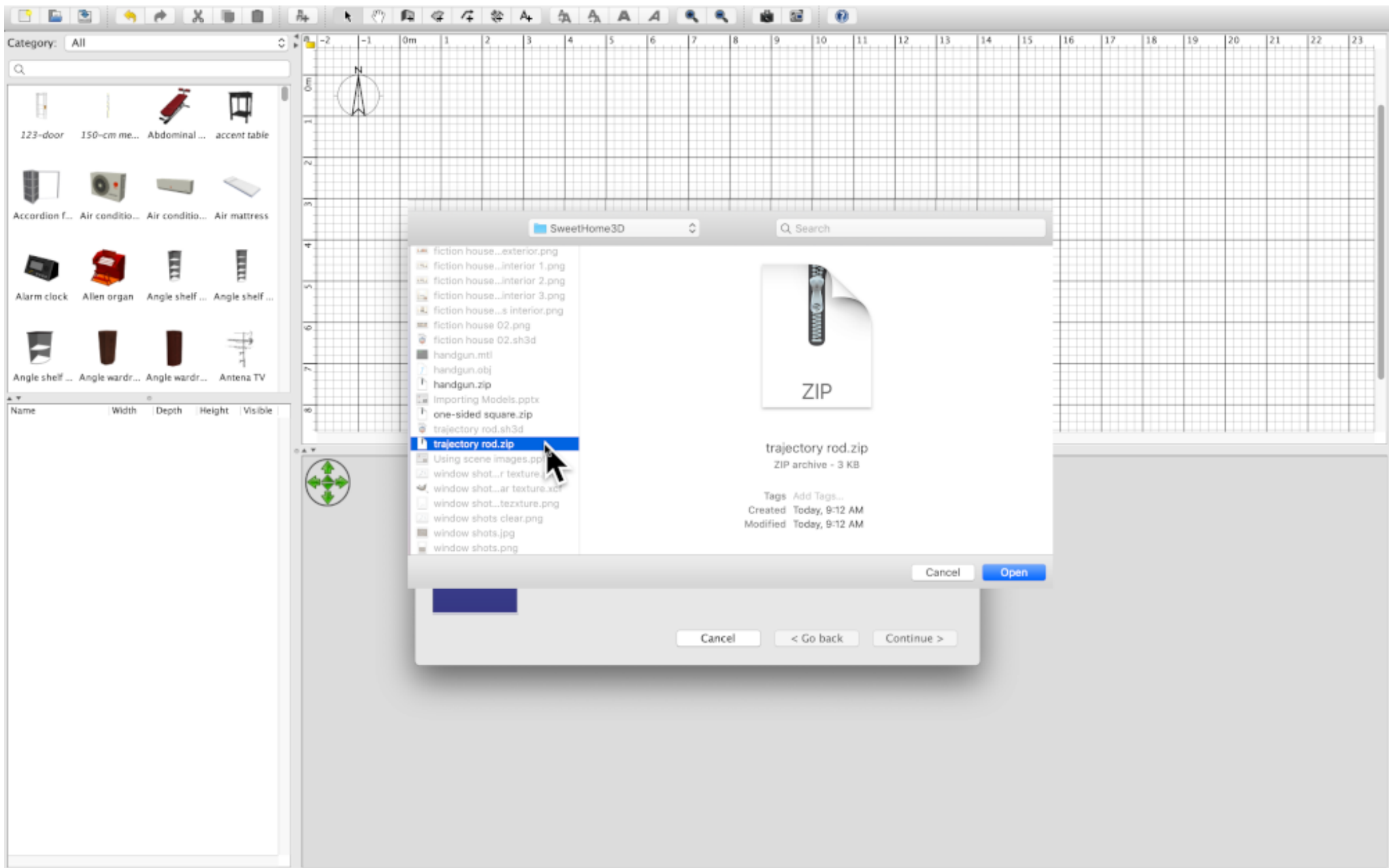
Delete the cylinder from your scene.



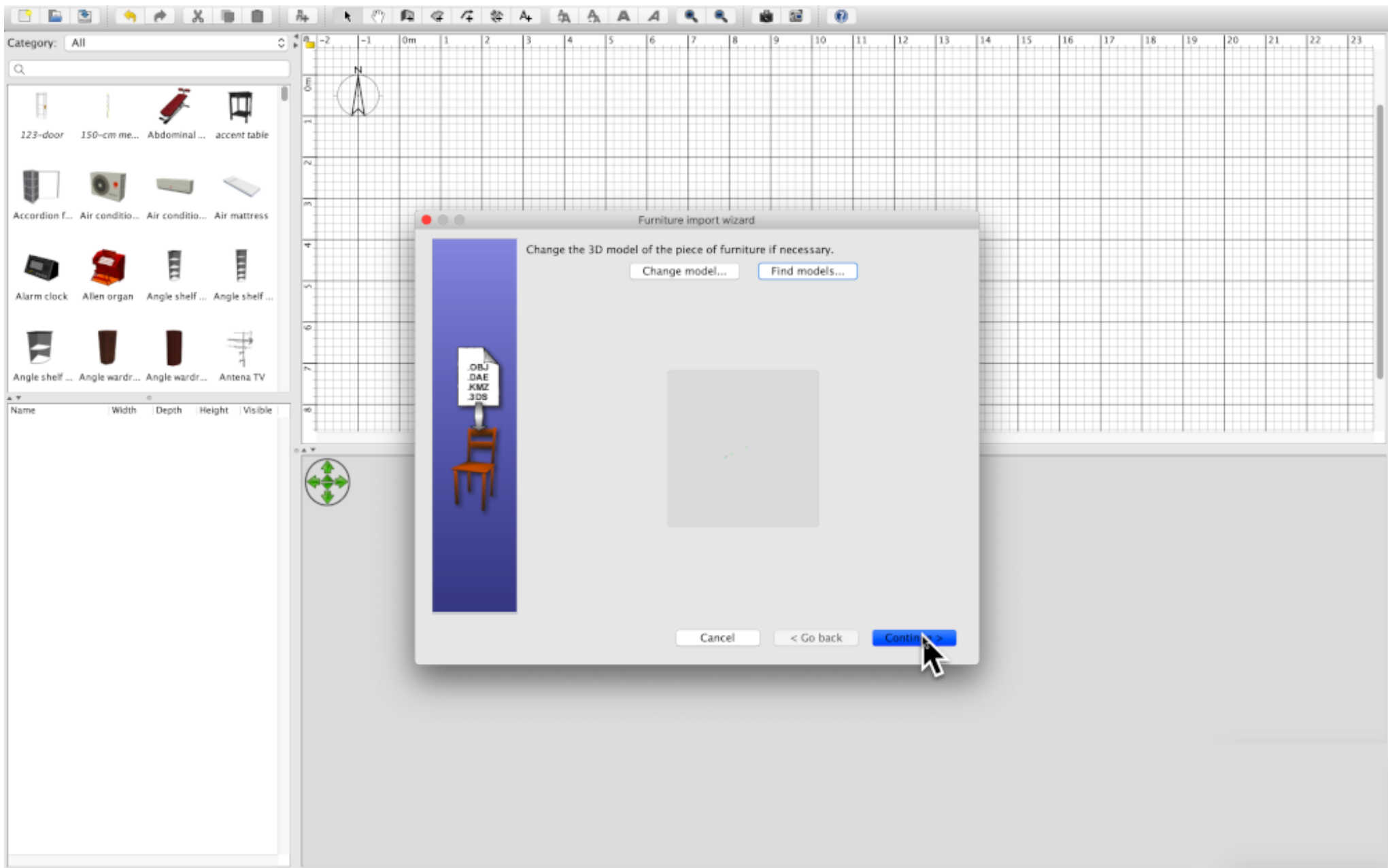
Select 'Furniture / Import furniture'



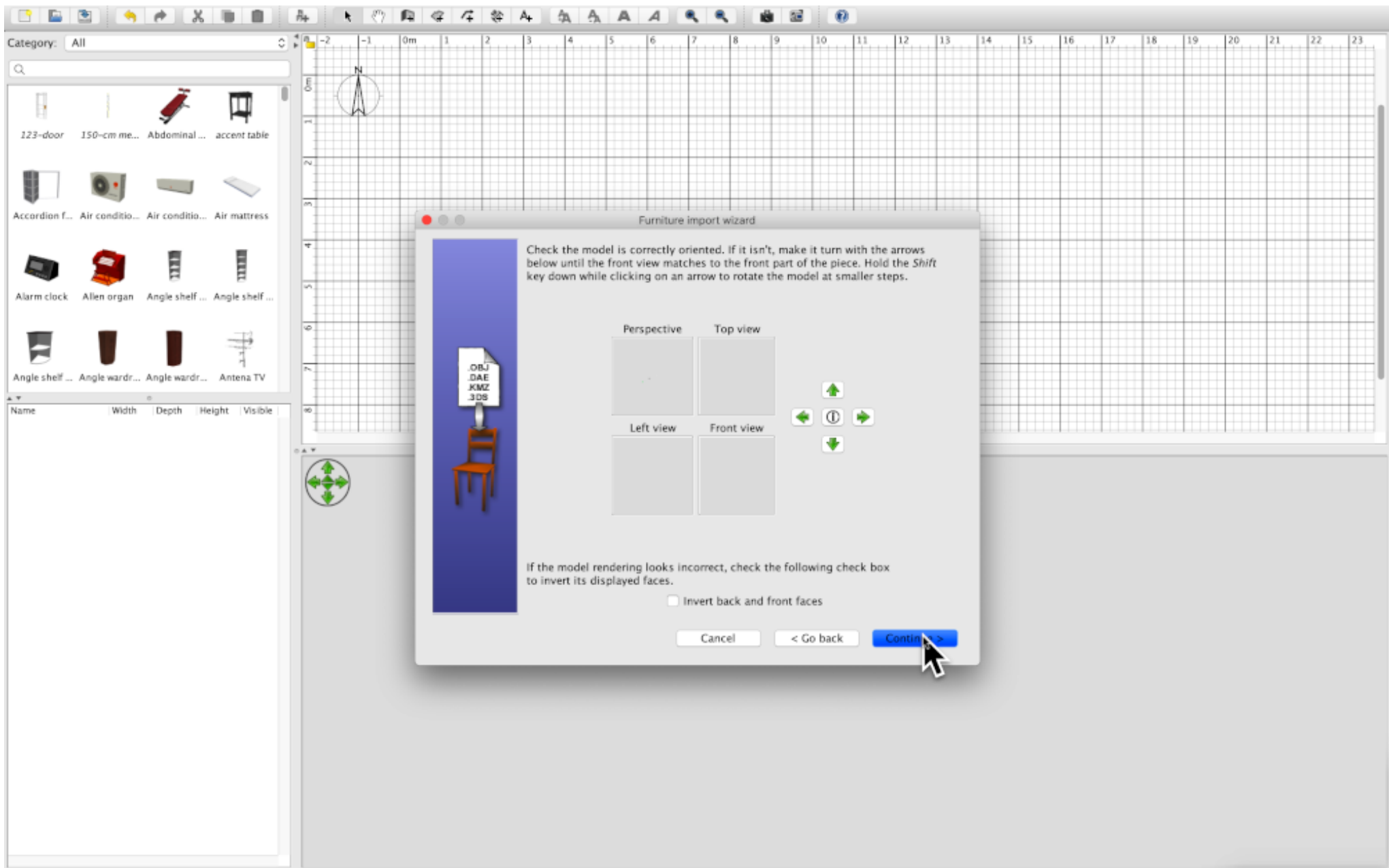
In the 'Furniture import wizard' menu select 'Choose image'.



Find the “trajectory rod.zip” file that was exported from your scene.
‘Open’



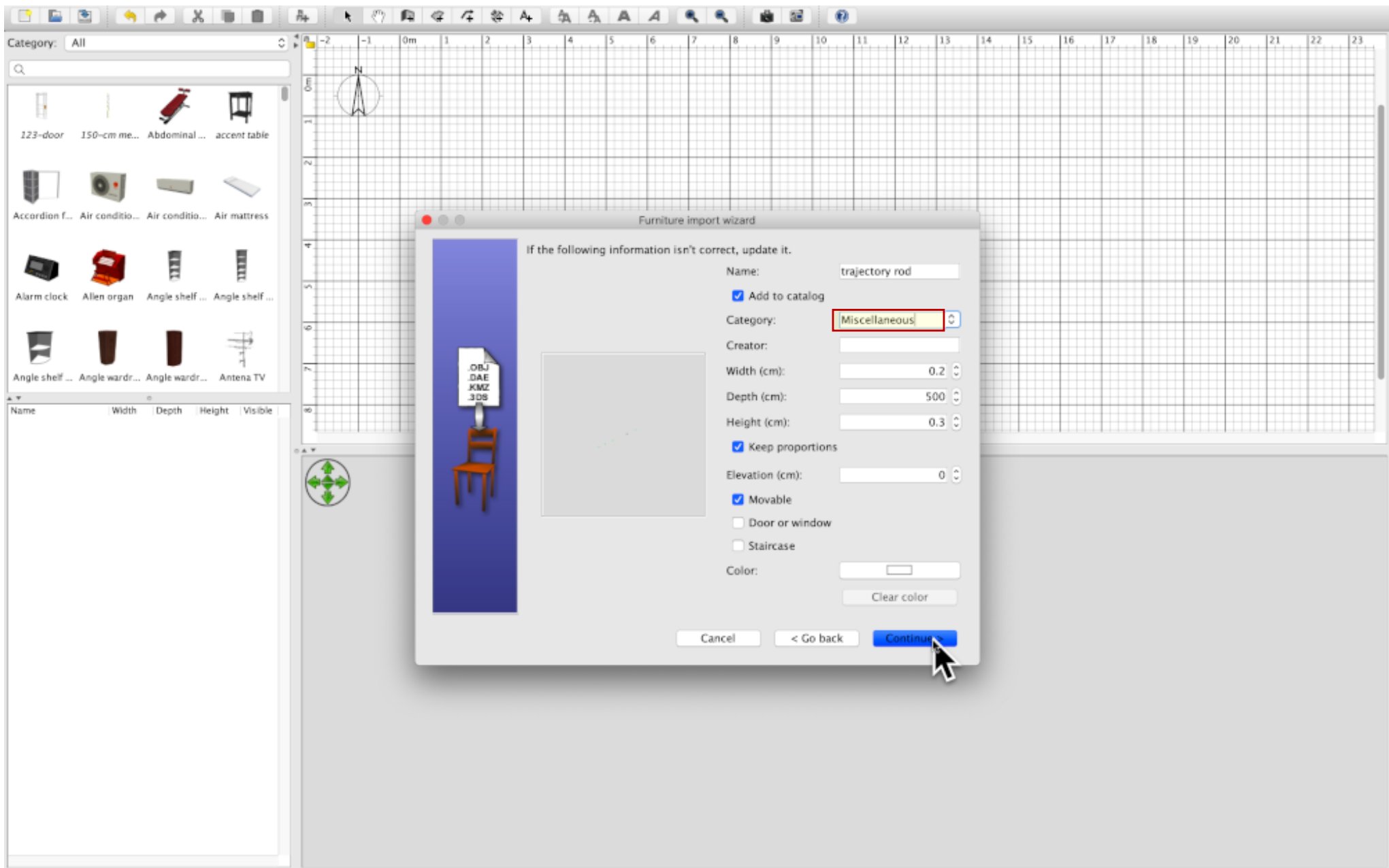
The rod will appear in the 'Furniture import wizard' window. Because the rod is long and narrow it may be difficult to see. 'Continue'



Four views of the rod.

Because the rod is long and narrow it may be difficult to see.

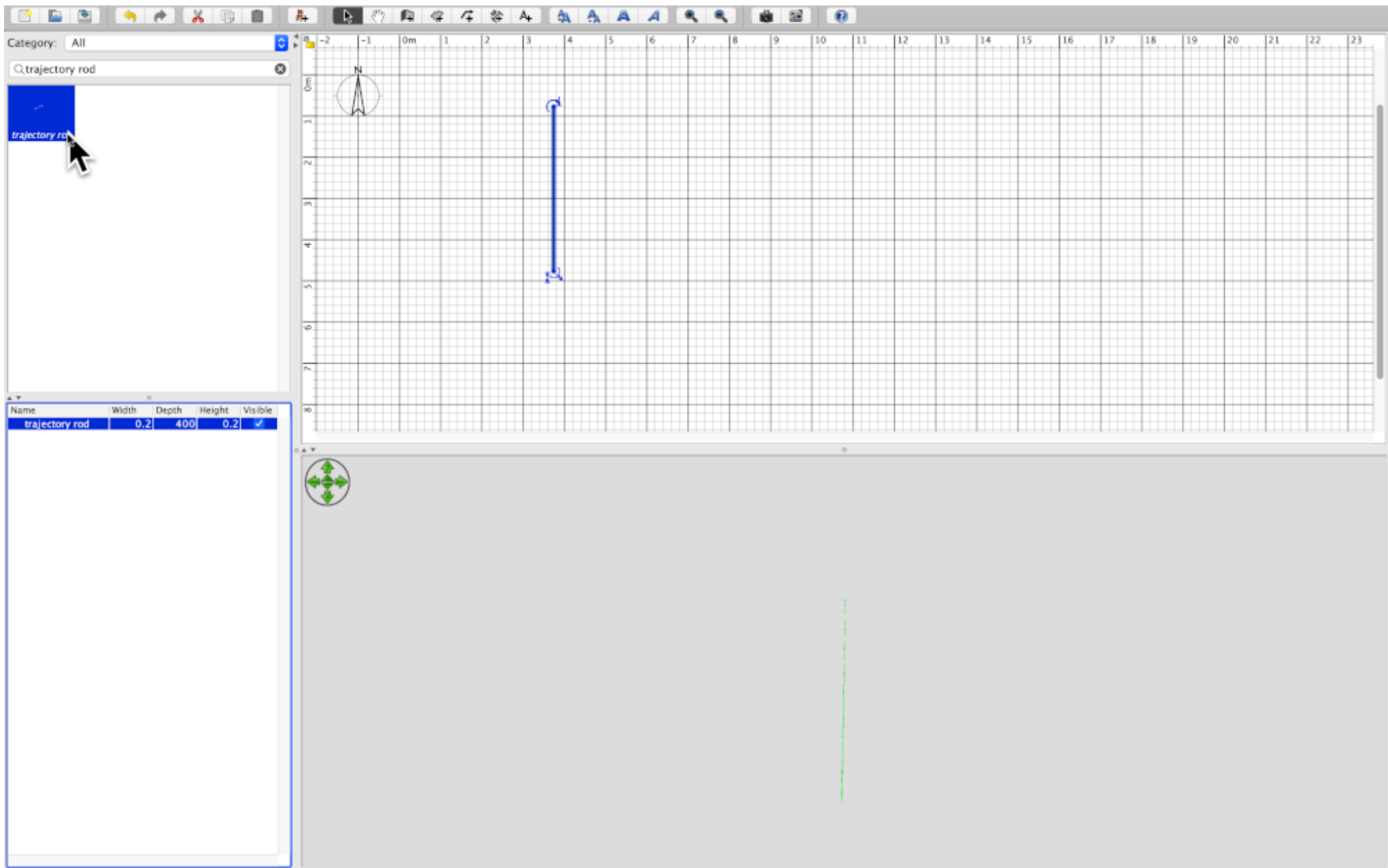
‘Continue’



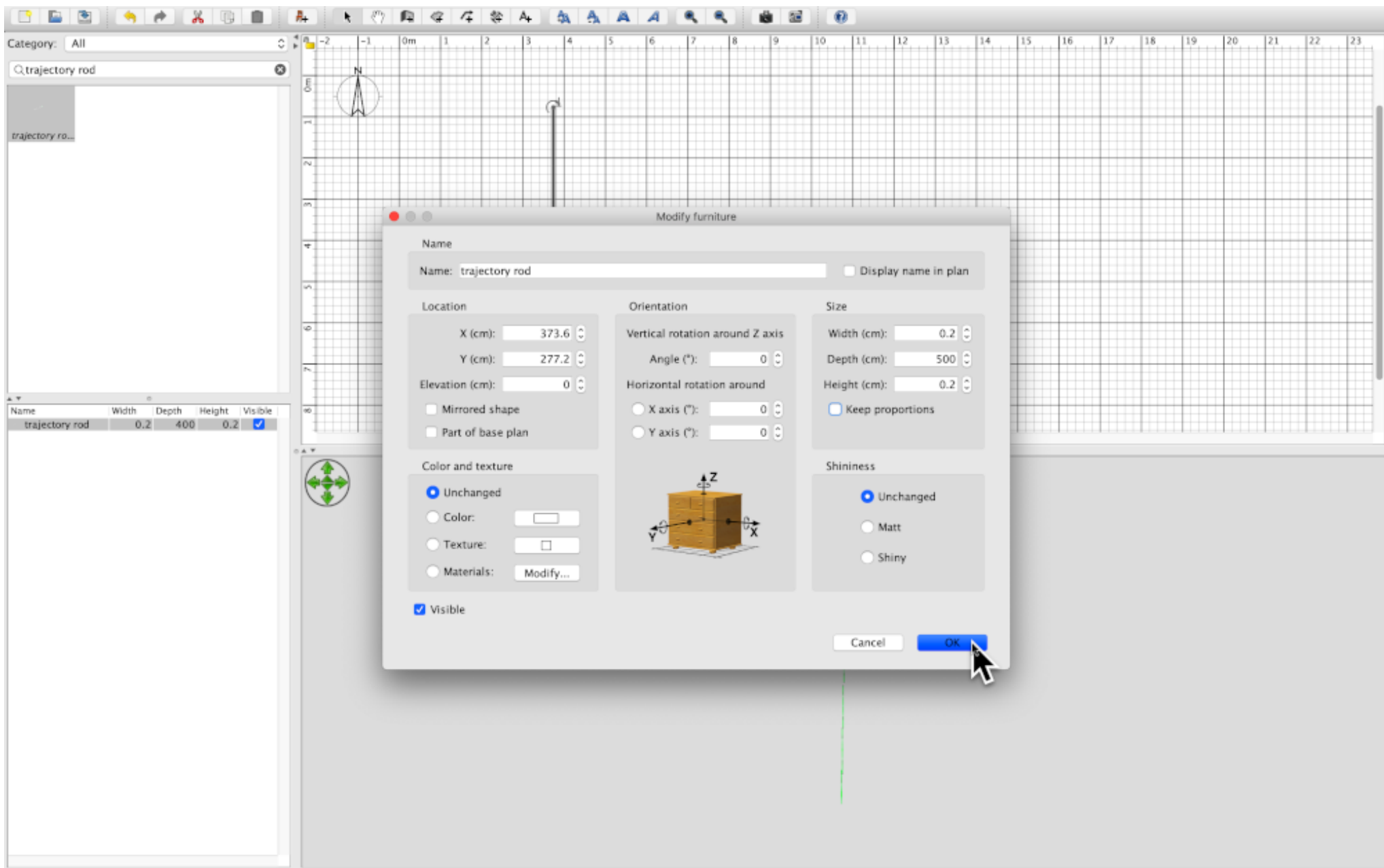
Check 'Add to catalog'.

Select a category location for the rod.

This saves the model into your library for use in future scenes.



Check your work.
Search for the trajectory in your furniture library. Drag it into the blank scene.
Then double-click to open the 'Modify furniture' menu.



Because the exported file was a green horizontal rod, the imported rod is green and horizontal by default.

When the rod is used in scenes the location and orientation can be modified to fit the measured trajectory in the real scene.